

# Options

**Metric version:** Pitch spacing 5mm, resolution 2.5mm

**Hose kit:** Class approved Aeroquip 234 blue (fuel tank approved) with stainless steel fitting (1/2" male NPT with union on one end) Comes as set of two for top and bottom tank connection

**Independent level alarm:** Alarm reed switches with voltage free contact can be strapped to the DLI along its length to provide for independent level alarms.

**Custom options:** At Bergan we pride ourselves in solving YOUR PROBLEM so give us a challenge.

# Considerations

When considering tank gauging solution for tanks that have side access and where a visual indication is required, there are traditionally two methods used. Sight glass tubes and magnetic flag type gauges. Neither solutions provide a simple 4-20mA output for remote indication to ECR,BCR or bridge.

Sight glass tubes are prone to breakage and due to short lengths, multiple staggered units are required to gauge the useful gauging span of most fuel tanks.

Magnetic flag type sight gauges are reliable and convenient for local display, but does not offer an easy and low cost way to remote the level reading to a 4-20mA.

The Bergan DLI gauge is a fully 100% digital solution that combines the visual requirement and remote 4-20mA in a compact package that is rugged and not prone to glass breakage. Only two tank penetrations are required and the installation is simple.

Specifications subject to change without notice.  
Ian-Conrad Bergan, LLC reserves the right to constantly improve product performance.

Guard Level,<sup>®</sup> CargoRadar,<sup>®</sup> Bergan Tank Control,<sup>™</sup> and the Bergan Logo are trademarks of Ian-Conrad Bergan, LLC  
Copyright 2014



**Ian-Conrad Bergan, LLC**  
**1001 E. Belmont Street**  
**Pensacola, Florida 32501,**  
**U.S.A.**

# Guard Level<sup>®</sup> DLI

## Digital Level Indicator



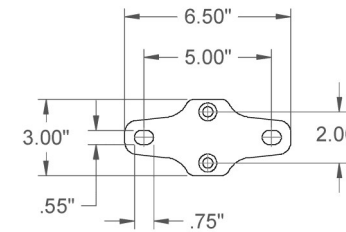
- Visual tank gauging with standard 4-20mA + HART (loop powered)
- Eliminate fragile glass tubes and potential dangerous fuel leaks
- Single DLI indicator for entire tank span up to 20 feet.
- Reliable red LED for exact fluid level indication
- Simple and easily understood measurement technology
- 1/4" digital pitch spacing
- 1/8" resolution
- Zero sensor drift
- Absolute linearity
- Ultra high reliability, low maintenance, calibrated for life
- Available independent level alarms (LL, HL & HH)
- Complies with U.S. Coast Guard Regulation 46 CFR 56.50-908, and 153.409
- All electrical parts can be serviced without disturbing tank content
- 2 core cable transmission
- Simple and cost effective installation



# Specifications

<b>Power supply</b>	22-30VDC, nominal 24 (loop powered)
<b>Power consumption</b>	@ 24VDC instrument consumes 96mW @ 4mA and 480mW @ 20mA
<b>Output signal</b>	4-20mA + HART (unit is not independently HART certified)
<b>Measuring range</b>	Level: 16" (minimum) to 240" (20') in 16" increments (15x16)
<b>Measurement accuracy</b>	1/4" absolute
<b>Measurement resolution</b>	1/8"
<b>Measurement media</b>	All liquids with S.G. from 0.6– 1.2 (density offset available through HART configuration) Suitable for all grades of diesel /hydraulic and cylinder oil as well as non-corrosive liquids compatible with aluminum.
<b>Main body material (bridle by-pass tube)</b>	6063 T6 Aluminum extrusion with AISI 304 stainless steel end caps, double Viton o-ring seal and Viton flat gasket
<b>Lens material</b>	Extruded polycarbonate, O-ring sealed against aluminum extrusion
<b>Measuring scale</b>	Laser engraved white on blue
<b>Mounting hardware</b>	Tank wall support bracket AISI 304 SS supplied as necessary
<b>Float</b>	NITROPHYL Unsinkable closed cell with rare earth magnet
<b>Temperature</b>	Measurement liquid: -55°C to +125°C (-67° to 257°F) Ambient::: -30°C to +60°C (-22° to 140°F)
<b>Electrical Safety</b>	Unit is not certified Intrinsically Safe or Explosion proof and is not suitable for fitting in areas classified "HAZARDOUS"
<b>Process connections</b>	1/2" NPT via approved hose or tube. ICB recommend isolation valves for service without having to empty tank.
<b>Cable entry</b>	Standard Bronze cable gland
<b>Electrical junction box</b>	Cast aluminum powder coated NEMA 4 (IP67)
<b>Options</b>	See back page:

# Installation Outline



MOUNTING BRACKET SUPPLIED BY BERGAN

Interface to Bergan or any makers monitoring system by simple 4-20mA two wire connection

